

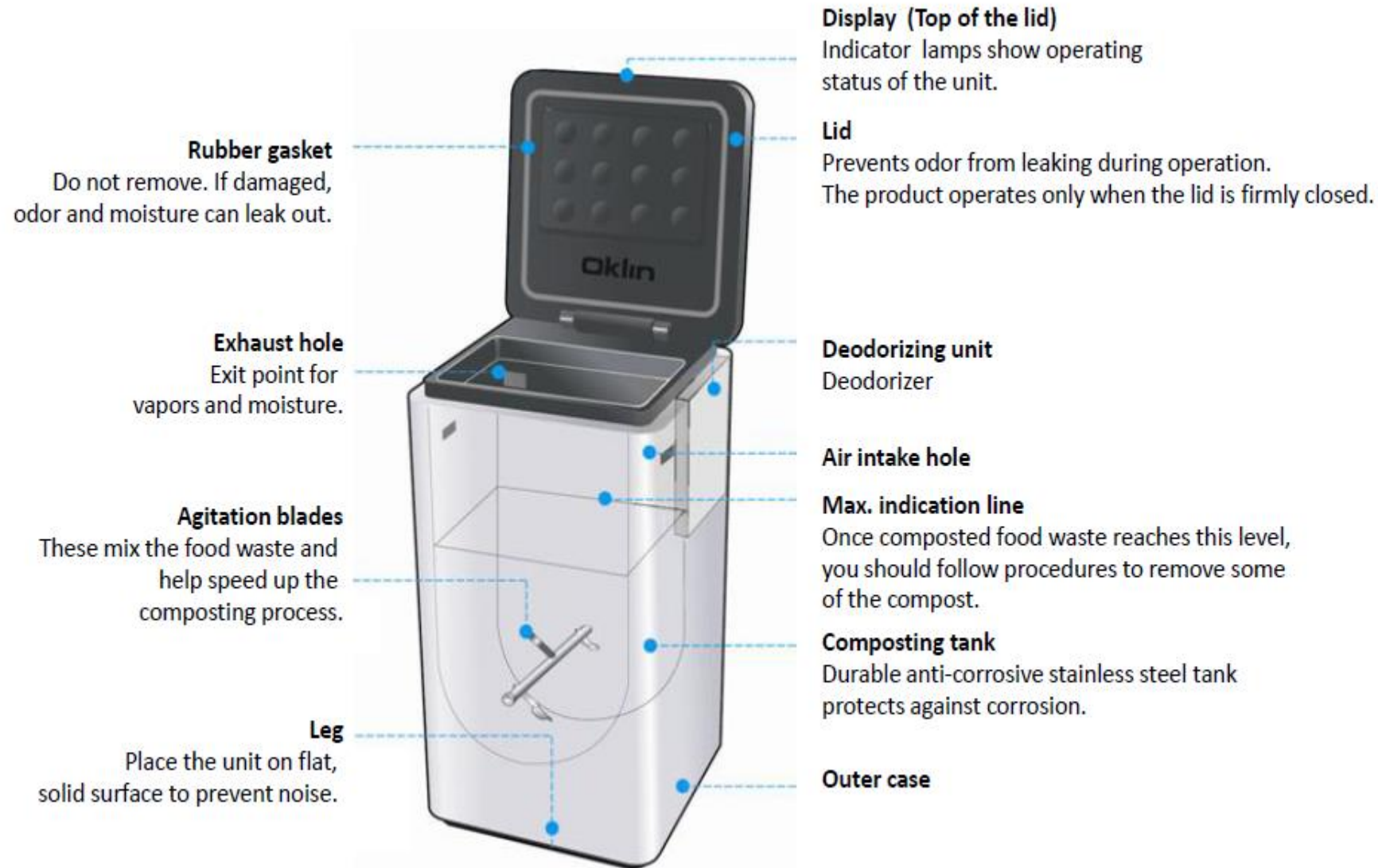


環境保護署  
Environmental Protection Department



# **Pilot Programme on Provision of Small Food Waste Composters at Schools (Workshop 1)**

# Food Waste Composter Funding Pilot Program

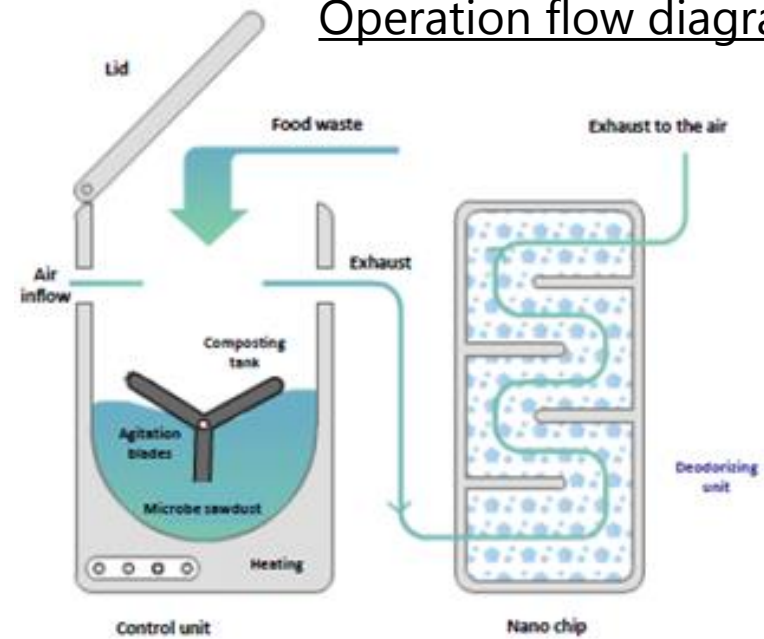


# Food Waste Composter

Food waste composter



Operation flow diagram



Accessories



Exhaust hose



Leveling wedge



Scraper



Small shovel



Microbe sawdust (5l \* 2 bags)



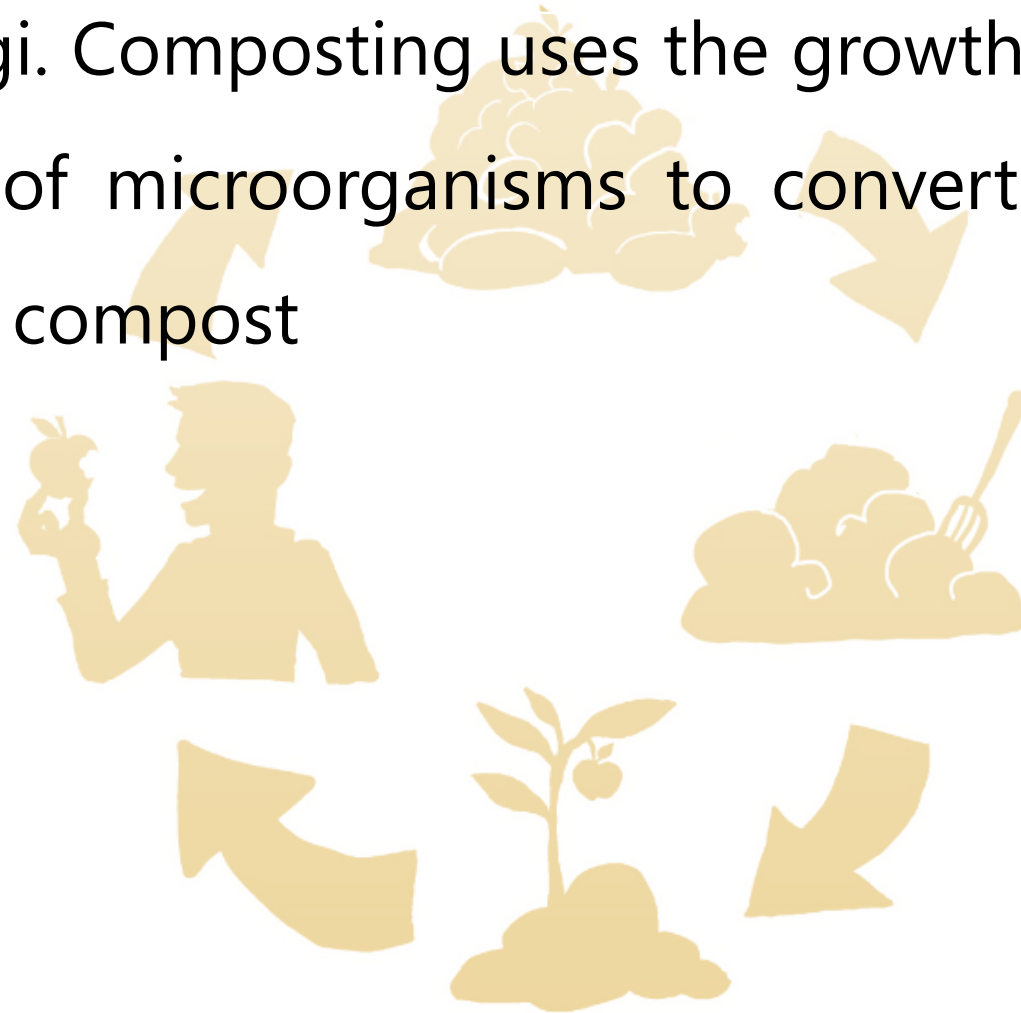
PVC elbow



Manual

# Principles of composting (1)

There are large amounts of microorganisms in the nature, such as bacteria and fungi. Composting uses the growth, reproduction and the metabolism of microorganisms to convert organic materials (food waste) into compost



# Principles of composting (2)

The process of composting can be divided into three phases:

- Mesophilic stage
- Thermophilic stage
- Cooling stage/ curing stage



# Sorting food waste – recyclable



Fruits: fruit core, fruit peel



Vegetables : leaves, roots, seeds, skins



Rice : Rice and other grain products



Wheat: Noodles, bread and other wheat products



Beans: All bean products, such as tofu



Meats: Raw or cooked chicken, duck, fish, meat



Residues: Tea leaves, Chinese medicine and coffee residues



Soft shell (in small amount): Shrimp shells, egg shells

# Sorting food waste – non-recyclable



Liquids: Soup, sauce and juice



Large bones: bones of pig, cow, chicken and duck



Cutlery: chopsticks, toothpicks, fork and spoon



Plastic products: plastic bags, plastic table cloths and nylon ropes



Cardboards: Packaging box



Metal Products



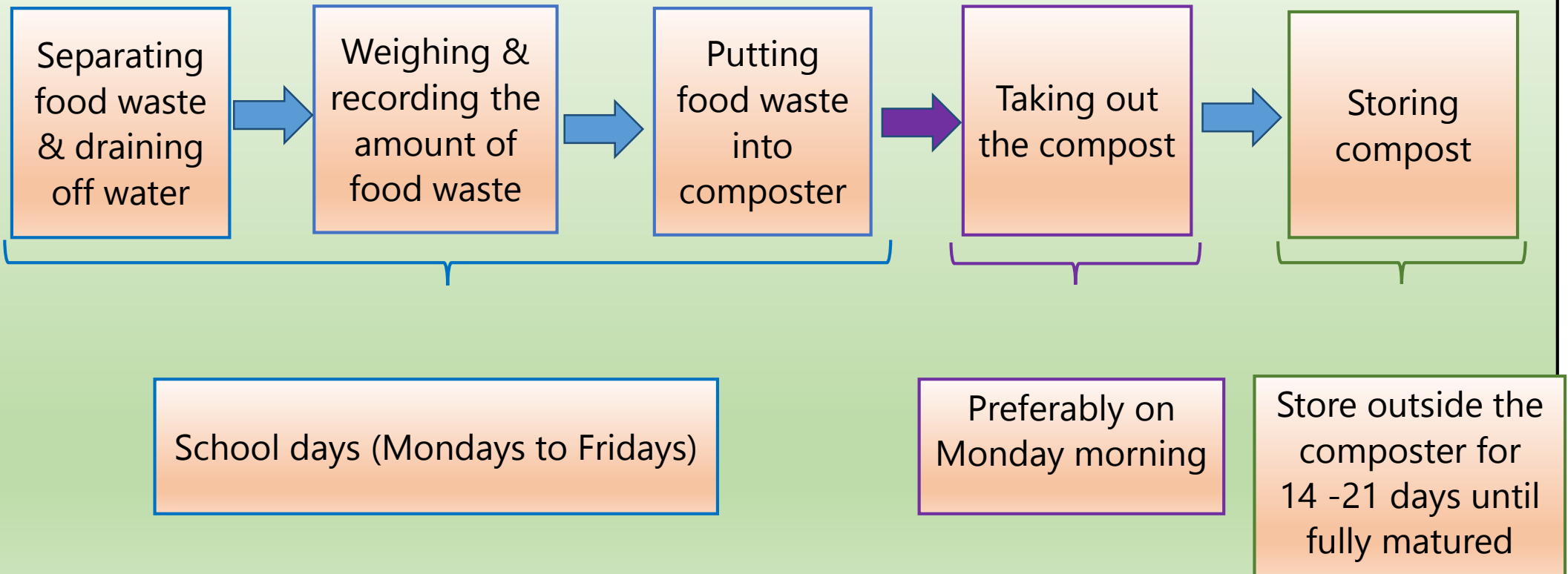
Glass products



Household chemicals: Detergents, insecticides

# Operation flow diagram

## Operation flow diagram



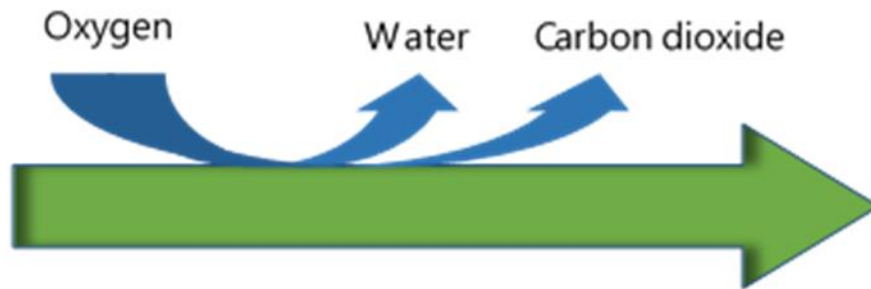


# Composting

- Composting can be classified into aerobic composting and anaerobic composting
- The small to medium size food waste composters commonly seen in Hong Kong mainly use aerobic composting



Food Waste



Compost

# Precautions

- Formulate the routes for transporting food waste to avoid generating nuisance to other students
- Reserve space for composter, colander, bucket, digital scale and compost storage box
- Reserve enough safety passageways and space for operation

# Precautions during operation

- Observe whether the compost inside the chamber is loose, in dark brown color and with earthy smell
- Observe whether there are water droplets inside the chamber
- Clean the air supply / exhaust gas screens regularly
- After putting the food waste into the composter, the total volume should not exceed the maximum indicated line

# Thank You !

